

RESIPOX®

RESIPOX® IS AN EASY-TO-APPLY TROWEL MORTAR FOR QUICK LASTING REPAIRS.



BENEFITS

- Concrete repair product for structural repair according to EN 1504-3
- Easy processing
- Odour and dust free
- Fast curing
- Liquid-tight (polishing and a thickness of minimum 10 mm)
- Can be applied horizontally and vertically
- Can be pigmented
- High mechanical strength



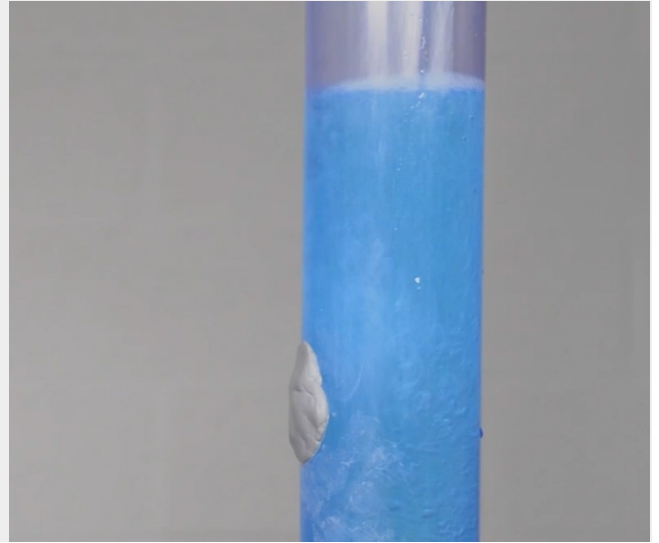
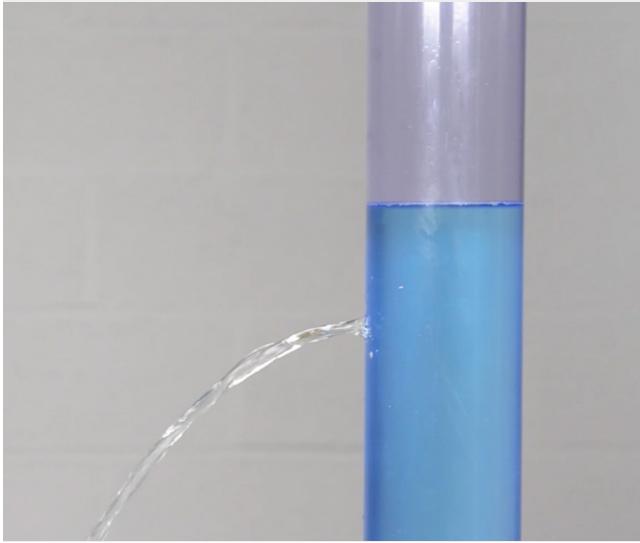
FIELD OF APPLICATION

Particularly suitable for seamless plinths, levelling of level differences and concrete repair.



EPICOL T

EPICOL T IS AN EPOXY-BASED PUTTY WITH A SIMPLE MIXING RATIO SUITABLE FOR FILLING, MOULDING AND REPAIRING.



BENEFITS

- Can be applied underwater
- High adhesive power
- Simple mixing ratio 1 : 1 with colour control
- Solvent-free
- No long-term adverse aquatic life effects
- Applicable horizontally and vertically
- Can be worked after curing
- Limited layer thickness



FIELD OF APPLICATION

EPICOL T can be applied underwater and sticks to wood, stone, concrete and metal. After curing, EPICOL T can be worked mechanically.

